

# RMFT 2.4.1 – Release Notes

## May 2009

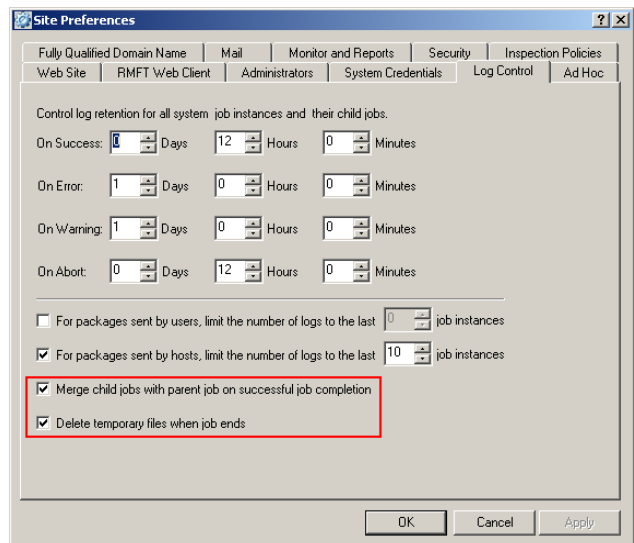
RMFT allows organizations to architect efficient workflows and facilitates user-friendly file exchanges so IT resources can focus elsewhere. As a secure communications platform, RMFT offers key features such as authentication, file access authorization, encrypted transport, and comprehensive auditing over the file transfer process. As an automation solution, RMFT allows organizations to schedule and execute end-to-end transfer processes with guaranteed delivery using standard and/or proprietary protocols.

RMFT 2.4.1 includes improvements to log handling and monitoring as well as an add-in for RMFT Desktop Client that enables users to send files directly from Microsoft Office 2007 applications.

## New and Improved Management Capabilities

### Performance and Scalability

- Log Consolidation** - An option has been added to merge child jobs with parent jobs on successful job completion. This not only increases GUI responsiveness by displaying less jobs, but also makes jobs easier to find (since only the parent jobs will be displayed). To reflect this change, the **Log Retention** tab has been renamed **Log Control**.
- Deletion of Temporary Files** – To save disk space and reduce fragmentation, a **Delete temporary files when job ends** option has been added to the **Log Control** tab.



## Monitoring

- **File Filter** - Administrators can now filter the package monitor to show only packages containing specific files or file types.

The screenshot shows a 'Filter Configuration' dialog box with the following fields and options:

- Name: [Text Field]
- Description: [Text Field]
- Status: [None] (Dropdown)
- Arrived: [Anytime] (Dropdown)
- Between: [1/12/2009] [10:42:15 AM] and [1/12/2009] [10:42:15 AM] (Time/Date pickers)
- Subject: [Text Field]
- From: [Text Field]
- To: [Text Field]
- File name: [Text Field] (highlighted with a red box)
- Location:  Private  Common (Radio buttons)
- Buttons: [OK] [Cancel]

- **Package ID Column** - An **ID** column has been added to the Package Monitor, enabling sorting and filtering by package ID.
- **Health Monitor**
  - Hot Directory file processing errors and delays are now reported to the System Health Monitor.
  - Traces may sometimes be requested by Support to assist them in resolving esoteric problems. Since traces can adversely affect system performance, it is important to be aware of any traces that are enabled. For this purpose, traces that have been enabled will now be displayed in the Health Monitor. Double-clicking the "Trace" item in the Health Monitor will display the type, level and location of the trace(s).
- **Event Viewer** - File names have been added to package transfer error reports in Windows Event Viewer.

## FTP/S - Ignore Server IP address

An **Ignore IP address returned by server** option has been added to the FTP/FTPS protocol's **Transfer** tab. When this option is selected RMFT will only connect to the IP address specified in the Host name/IP address field of the **General** tab.

## **Synchronization of Default Active Directory Groups**

The RMFT Active Directory Synchronization feature now supports the synchronization of predefined Active Directory groups. Predefined or default groups, such as the Domain Admins group, are security groups that are created automatically when you create an Active Directory domain. Other examples of default Active Directory groups include Backup Operators and Network Configuration Operators.

## **Installation of RMFT in an Existing RMFT Environment**

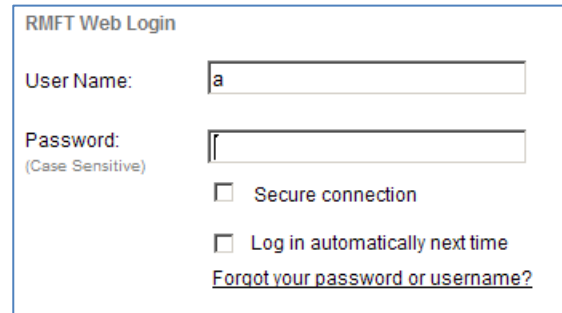
If disk failure occurs or if the RMFT Server machine has reached End-of-Life and needs replacing, you can install RMFT on top of the existing RMFT environment. This option is especially suitable for production systems that require constant availability. Applicable scenarios include:

- RMFT cluster setup – The primary machine has reached End-of-Life and needs to be replaced. After replacing the primary machine, you can maintain all your original settings by reinstalling RMFT to the existing shared installation path.
- A single RMFT Server machine with two disks – RMFT is installed on disk X. Due to disk failure, disk Y (the system disk) has been replaced. After replacing the disk, you can maintain all your original settings by reinstalling RMFT to the original installation path.

## New and Improved End-User Capabilities

### RMFT Web Client

- **Forgot Password** - RMFT Web Client users can now reset their passwords by clicking the “Forgot username or password?” link in the login page.



RMFT Web Login

User Name:

Password:   
(Case Sensitive)

Secure connection

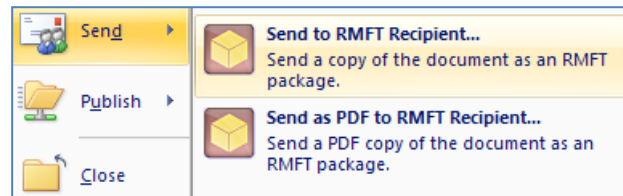
Log in automatically next time

[Forgot your password or username?](#)

- **Safari Browser Support** - Added support for Apple Safari v3.2 and above.
- **Chrome Browser Support** - Added support for Google Chrome v1.0 and above.

### Desktop Client

- **Office 2007 Add In** - Users can now send files directory from Microsoft Office 2007 applications (Word, PowerPoint and Excel) using the RMFT Desktop Client Send Menu Add-In for Office 2007.



- **Package Receipt** - A “Notify me when package is opened or downloaded” option has been added to RMFT Desktop Client. When this option is selected, users will be notified by email whenever any of the package recipients opens the package or downloads its file(s). The sender will also receive an email before the package expires, summarizing the recipient activity (e.g. which recipients opened the package, which recipients downloaded files, and so on).

### RMFT CLI

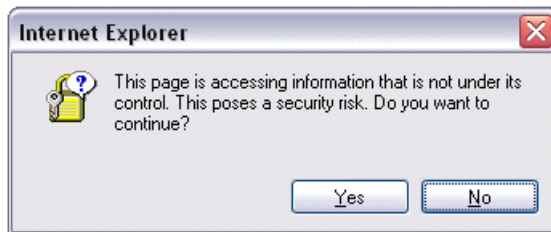
The `-allow_nonascii_filenames` qualifier has been added to RMFT command line clients, enabling users to send files with non-ascii filenames (e.g. Chinese).

## Known Issues

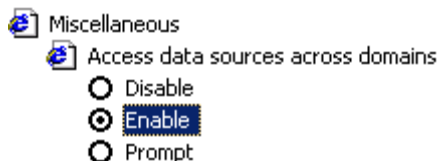
The following is a list of known issues with RMFT 2.4.1:

### RMFT Web Client

- **Missing Login Information** - Normally, if a user receives an email notifying him/her that a new package is available for download and then clicks the package download link, RMFT Web Client's login page will already contain his/her login information. However, if the browser cookies are cleared before the package download link is clicked, the login page will not display the user's login information.
- **Google Chrome** - The RMFT Java Applet may fail to load when RMFT Web Client is run on Google Chrome for the first time. Pressing F5 will resolve the problem. (Though usually you only need to press F5 once, you may need to keep pressing F5 until the RMFT Java Applet is successfully loaded).
- **IE6 on Windows Server 2003** – IE6 users may encounter the following error when attempting to log in to RMFT Web Client on Windows Server 2003:



To resolve this issue, users need to change the **Access data sources across domains** security setting to **Enable** (**Tools > Internet Options > Security > Select a Zone > Custom Level**).



### RMFT Desktop Client

- **“HTTP 413 Request Entity too Large” error** – Occurs when users try to send a package in “IIS Secure” mode. This issue can be resolved by increasing the default IIS request size (applies to IIS 6 only). For full instructions, please refer to:

[http://www.repliweb.com/resources/faq/managed\\_file\\_transfer/faq\\_531.php](http://www.repliweb.com/resources/faq/managed_file_transfer/faq_531.php)

## Bug Fixes

The following is a list of issues that have been resolved in RMFT 2.4.1:

- **RMFT Server**

- Users whose accounts did not have local administrative privileges could not connect to RMFT Manager. The problem was fixed to allow any user whose account is listed in the Site Preferences' **Administrators** tab to connect.
- Sorting log did not reflect deliveries to hosts or their location (external or internal RMFT Server).
- Changes made to source hosts after duplication were reflected both in the source host and the duplicated host.
- If the database connection was lost, the job could not retrieve the sender's properties. When the job recovered the error message did not reveal the source of the problem or any of the sender's details.
- If a FASTCopy pull job ended and the parent pull job's scenario.log was locked, the job would end successfully but the created package would not contain the pulled files.
- The Hold and Resume monitoring options did not work as expected.
- When RMFT was configured to require SSL, the string `&secured_connection=on` was missing from the package download link, requiring users to manually select the Secure connection option.
- New package notification links sent to Hotmail accounts did not open correctly on Vista machines.
- The variable `$(PACKAGE_MESSAGE)` has been added to the variables drop-down list (accessed by clicking **Insert Variables**) in the Enrollment Invitation email template.
- User Templates - When selecting the **Java** or **Lite** Web Client start mode options, the mode would revert to **ActiveX** after clicking **OK**.
- SFTP - Selecting the compression option had no effect on the transfer.
- SFTP - Selecting the "Create Session Log" check box in the SFTP scenario did not generate a session log. The option has been removed.
- Occasionally, two different job families would be assigned the same Runtime Group ID.

- **Active Directory Synchronization**

- DMZ settings were always displayed in the Active Directory Synchronization template. This caused user creation errors when there was no DMZ setup.

▪ **RMFT Web Client**

- Upload of files using the RMFT Web Client “Lite mode” option would fail occasionally.
- Editing the domain field to display the domain in the default.xml file had no effect.
- Occasionally, the number of files displayed in the Transfer Progress window was inaccurate.
- When sending small files in Java Mode, the remaining transfer time format was displayed incorrectly.
- Clicking the Address Book button would generate a “Session Expired” message when trying to forward or reply to a package opened by clicking the new package notification link.
- Opening the Address Book page in a secured session would generate a security alert.
- “Forgot my Password” would not work if the server required the user to connect securely (HTTPS).

▪ **Cluster**

- RMFT certificates store (contains certificates for RMFT Server, users and hosts) has been added to the cluster resources and is now available on all cluster nodes.
- If RMFT is not installed in the default directory, replacing the primary node and reinstalling RMFT created a new installation folder and directed the services to it. RMFT will now be installed in the original location.
- When using the "BHubClusterSetup.exe" to install the second cluster node, the "Browse" button was the only means of entering the installation path. Now, the location can also be typed.

▪ **Desktop Client Installation**

- Only computer administrators were able to install RMFT Desktop Client for all users. Now, users with administrator rights (as opposed to computer administrators) are also able to select this option.
- Installing on Vista would remove some application shortcuts from the Start menu.
- Sometimes, the address book would only open after a long time.

▪ **Upgrade**

- Upgrade would fail if any of the existing XML files were invalid.