

RMFT 2.4.3 - What's New March 2010

RMFT allows organizations to architect efficient workflows and facilitates user-friendly file exchanges so IT resources can focus elsewhere. As a secure communications platform, RMFT offers key features such as authentication, file access authorization, encrypted transport, and comprehensive auditing over the file transfer process. As an automation solution, RMFT allows organizations to schedule and execute end-to-end transfer processes with guaranteed delivery using standard and/or proprietary protocols.

RMFT 2.4.3 introduces several new features as well as improvements to existing features. Console administration improvements enable administrators to quickly locate relevant packages and review package audit events. A new Java SDK facilitates seamless integration of RMFT's client and auditing capabilities with other applications. Enhanced support for corporate installation procedures enables smooth and rapid deployment of RMFT components within the organization. The end-user experience is now even more versatile with the addition of new login options. Additionally, RMFT 2.4.3 has been reviewed and accredited by a leading information security firm.

Key features include:

- A redesigned Package Audit interface, enabling RMFT administrators to easily review package events and troubleshoot any problems.
- New "Operator" role enabling authorized Windows users to monitor RMFT jobs and package transfers.
- Shared RMFT Desktop Client profiles for easy distribution within the organization.
- Silent installation of RMFT Desktop Client and other RMFT components.
- Java SDK for integrating RMFT's package sending and auditing capabilities into third-party applications.
- Package auditing capabilities added to the RMFT .Net SDK.

Significant improvements have also been made to stability and performance.

For more information about a particular feature, please refer to the *RMFT Administrator's Guide*.

Monitoring and Auditing

RMFT Manager - The new Package Audit interface (shown below) provides RMFT administrators with a detailed report of the events that occurred both during (server events) and after (recipient actions) package processing.

Package Audit

Options: Properties, Status, Events

Properties

From: a
 To: a;b;c;d;Sales;
 Subject: Help Documentation
 Size: 695.93 KB
 Unauthenticated Downloads: No Hide Recipients: No

Status

Package ID: a_8UKRTFUF0QT14E2QFV0N5LECM4
 State: Success
 Processing Started: 11/29/2009 5:23:01 PM Processing Ended: 11/29/2009 5:23:08 PM
 Expiration: 12/6/2009 5:23:03 PM (Not Expired)

Events

Files:

Name	Size	Downloaded By	Recipients
Documentation.hhp	15.56 KB	No Recipients	a User
Documentation.hhc	66.54 KB	No Recipients	b User
Documentation.hhk	111.78 KB	No Recipients	c User
Documentation.chm	502.05 KB	No Recipients	d User

Success Failure Download Notification [More Filters](#) [Clear Filter](#)

Status	Start Time	End Time	Event Type	Entity Name	File Name
Success	11/29/2009 5:23:02 PM	11/29/2009 5:23:08 PM	Package Processing		
Success	11/29/2009 5:23:06 PM	11/29/2009 5:23:07 PM	Delivery to Users		
Success	11/29/2009 5:23:07 PM	11/29/2009 5:23:07 PM	Delivery to User	a	
Success	11/29/2009 5:23:07 PM	11/29/2009 5:23:07 PM	Delivery to User	b	
Success	11/29/2009 5:23:07 PM	11/29/2009 5:23:07 PM	Delivery to User	c	
Success	11/29/2009 5:23:07 PM	11/29/2009 5:23:07 PM	Delivery to User	d	
Success	11/29/2009 5:23:03 PM	11/29/2009 5:23:04 PM	Inspection Policy	inspection policy	
Success	11/29/2009 5:23:01 PM	11/29/2009 5:23:01 PM	Package Validation		

Figure 1: New Package Audit Window

Quick Filter Toolbar – Package filtering has been enhanced through the addition of a Quick Filter Toolbar to the **Packages** pane. Using the Quick Filter Toolbar, administrators can quickly find relevant packages by overriding the **From**, **To** and **Subject** settings of the currently selected filter.

RMFT Manager - Connected to RMFT Server 2.4.3147 on <localhost>

File View Manage Monitor Help

From: brian To: jane Subject: Financial Report 2010

Hide Expired

RMFT

Settings Packages

Drag a column header here to group by that column

Status	From	To	Subject	Arrived	Size	Last Status
Success	brian	brian;jane;peter;	Financial Report 2010	2/18/2010 11:16:59 AM	620	2/18/2010 1

POP3/IMAP - An option to include a message's .eml file and its attachments in the package has been added to the **Include** tab of POP3/IMAP protocol. The .eml file contains all of the message properties such as who sent the mail, the CC recipients and more.

Heavy Load Reporting - RMFT Server maintains responsiveness by automatically activating load control when the number of active Jobs reaches a predefined threshold. RMFT will report to Windows Event Viewer if Heavy Load control is active for longer than a predefined time period. After the initial report, it will continue reporting at regular predefined intervals until Heavy Load control is deactivated (which will also be reported). The default reporting intervals can be changed by editing the [Load Control] section in ~\RepliWeb\RMFT\scheduler\config\server.conf

RMFT Client SDK

This version includes a Java SDK for integrating RMFT's package sending and auditing capabilities into third-party applications. The Java SDK complements the .NET SDK whose existing functionality has been extended to support package auditing.

Installation and Upgrade

Silent Installation - Silent installation of RMFT components has been expanded to support RMFT Receiving Agents, RMFT Desktop Client and the RMFT Administration Console.

Upgrade to 2.4.3 - In RMFT 2.4.3, the package auditing information has been extended to include additional package events. These changes affect both the backup procedure and the related upgrade procedure.

- **Backup** - Before beginning the upgrade, use the modified backup utility provided with the RMFT 2.4.3 installation kit to back up your existing packages and settings. For information on replacing the backup utility, please refer to the readme file. Note that if you back up your packages and settings using the existing backup utility, the additional auditing information introduced in RMFT 2.4.3 will not be available for restored packages.
- **Database Upgrade** – During upgrade, the existing RMFT database tables will be modified to support the new auditing information. Setup will calculate the estimated duration of the database modification process. If it is estimated to take more than 10 minutes, you will be asked whether you want to continue the upgrade or perform the upgrade later (when there is less system activity).

FTPS Security and Transfer

Security – The addition of several new security protocols (SSLv2, SSLv3, SSLv23, TLSv1), ensures compatibility when transferring files to/from FTP servers

Transfer – The **Transfer** tab now includes a **Send “Keep Alive” command every [] seconds** option, enabling uninterrupted transfers of large files.

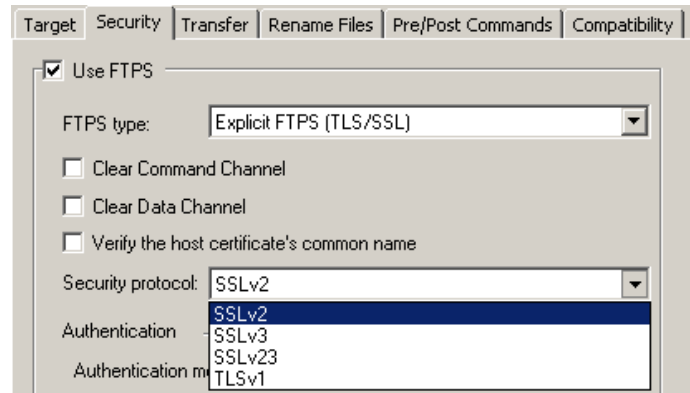
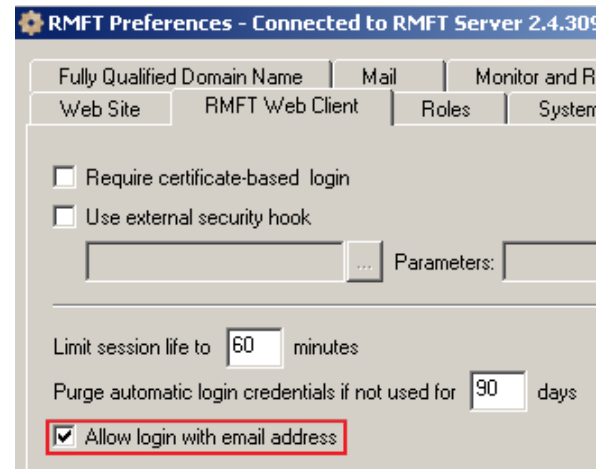


Figure 2: New FTPS Security Protocols

Email Login

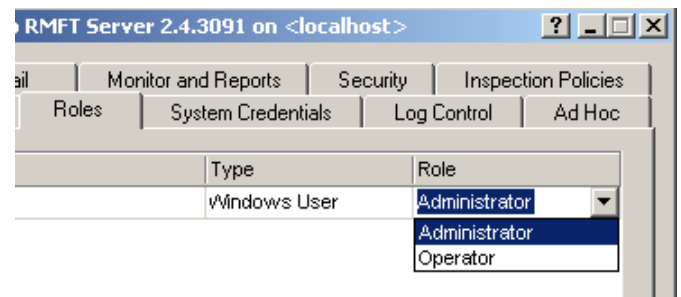
To further enhance the user experience, users whose account settings include an email address can now log in with their email address as well as their user name. This requires the **Allow login with email address** feature to be enabled in the RMFT Web Client tab.



Operator Role

A new “Operator” role has been added to complement the Administrator and Group Administrator roles. RMFT Operators are able to perform monitoring-related tasks such as viewing, holding and aborting jobs and transfers.

To reflect this change, the **Administrators** tab has been redesigned and renamed **Roles**.

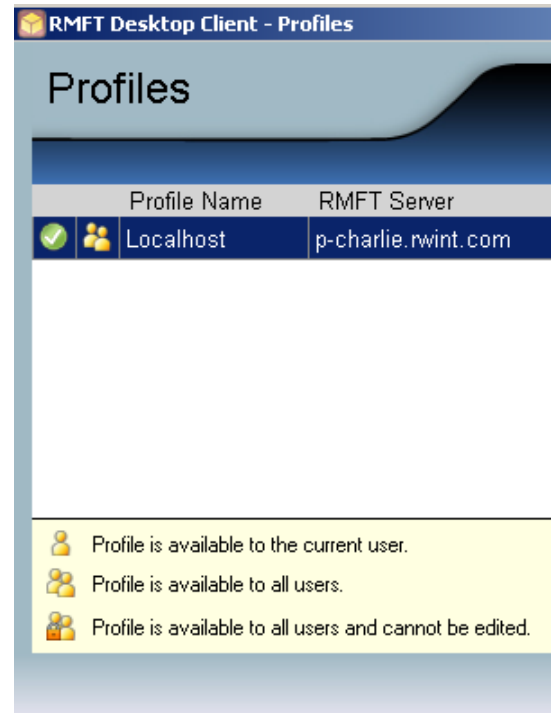


Shared RMFT Desktop Client Profiles

RMFT administrators can now create RMFT Desktop Client profiles offline and then distribute them to computers within their organization using a suitable application (e.g. Active Directory). This is especially useful when performing a silent installation of RMFT Desktop Client (since the silent installation does not install any profiles). RMFT administrators can also prevent users from editing the shared profile by giving the profile file read-only permissions.

RMFT users can also create profiles and make them available to other users on the same computer by selecting the new **Shared profile** option in the **Edit/New Profile** dialog box.

The profile permissions are indicated by an icon (as shown in the image on the right).



Comprehensive Security Assessment

During the development of RMFT 2.4.3, RepliWeb enlisted the services of a leading security information company to perform a comprehensive security assessment of the application. The assessment was based on widely recognized standards, including those published by OWASP and NIST. The security assessment report concluded that RMFT 2.4.3 does not contain any vulnerabilities that could be exploited by an attacker to impact the integrity or confidentiality of the applications, application data, or client systems. A certification letter can be obtained by contacting support@repliweb.com.

Additional Features and Improvements

- Support for Windows Server 2008 R2 Cluster.
- Support for SQL Server 2008.
- Support for AES 256-bit encryption.
- Faster download speed in RMFT Web Client Lite mode.