

RMFT FASTCopy Installation Guide

Software Version 2.4.3

January 5, 2010

January 5, 2010
Copyright © 2000-2010 by RepliWeb, Inc.

This product includes cryptographic software written by Eric Young
(eay@cryptsoft.com)

The information in this document has been compiled with care, but RepliWeb makes no warranties as to accurateness or completeness, as the software described herein may be changed or enhanced from time to time. This information does not constitute commitments or representations by RepliWeb, and is subject to change without notice. The software described in this document is furnished under license and may be used or copied only in accordance with the terms of this license.

No part of this document may be reproduced or transmitted in any form or by any means, electronic or mechanical, for any purpose, without the express written consent of RepliWeb, Inc.

Any trademarks, trade names, service marks, or service names owned or registered by any other company and used in this document are proprietary to that company.

Please direct correspondence or inquiries to:

RepliWeb, Inc.
6441 Lyons Road
Coconut Creek
FL 33073

Phone: (954) 946-2274

Fax: (954) 337-6424

E-Mail: info@repliweb.com,

Support: <http://support.repliweb.com/>

Web Site: <http://www.repliweb.com/>

Table of Contents

Introduction	5
Minimum System Requirements	5
1. Installing RMFT FASTCopy Receiving Agent	6
2. Upgrading the Installation	10
3. Modifying, Repairing or Removing the Installation.....	12

Preface

Purpose

This guide describes how to install RMFT FASTCopy Receiving Agent.

Audience

RMFT administrators.

Scope

This guide does not provide configuration instructions for RMFT FASTCopy Receiving Agent. For configuration instructions, please refer to the *RMFT FASTCopy Administrator's Guide*.

Related Documentation

- *RMFT Administrator's Guide*
- *RMFT FASTCopy Administrator's Guide*
- *RMFT GQS Agent Configuration Guide*

Introduction

RepliWeb Managed File Transfer (RMFT) is a turnkey solution for managed, enterprise-scale file exchange. RMFT greatly improves the manageability, reliability, efficiency and security of file workflows and file transfers. RMFT's user-friendly Web interface enables end-users to exchange files with ease, while fully automated server-to-server file transfer and automated file processing provide complete "hands-off" operation. By streamlining management and administration of file transfers, RMFT removes key concerns about day-to-day file transfer processes and file workflows, allowing organizations to focus valuable resources elsewhere.

This guide provides complete installation instructions for RMFT FASTCopy Receiving Agent. RMFT FASTCopy Receiving Agent must be installed on any machine from or to which files are pulled/pushed using RMFT's FASTCopy protocol.

Minimum System Requirements

Before installing RMFT FASTCopy Receiving Agent, make sure that the system meets the following minimum requirements:

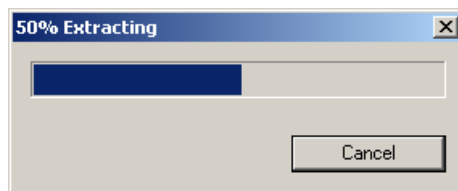
- Windows 2000 and above
- Pentium 4
- 512MB of RAM
- 20MB of available hard disk space

1. Installing RMFT FASTCopy Receiving Agent

To install RMFT FASTCopy Receiving Agent:

1. Copy the RMFT FASTCopy Receiving Agent self-extracting installation file (**RMFT_Receiving_Agents_<version>.exe**) to a directory on your computer.
2. Run the installation file.

The RMFT FASTCopy Receiving Agent Setup files are extracted to a temporary directory.

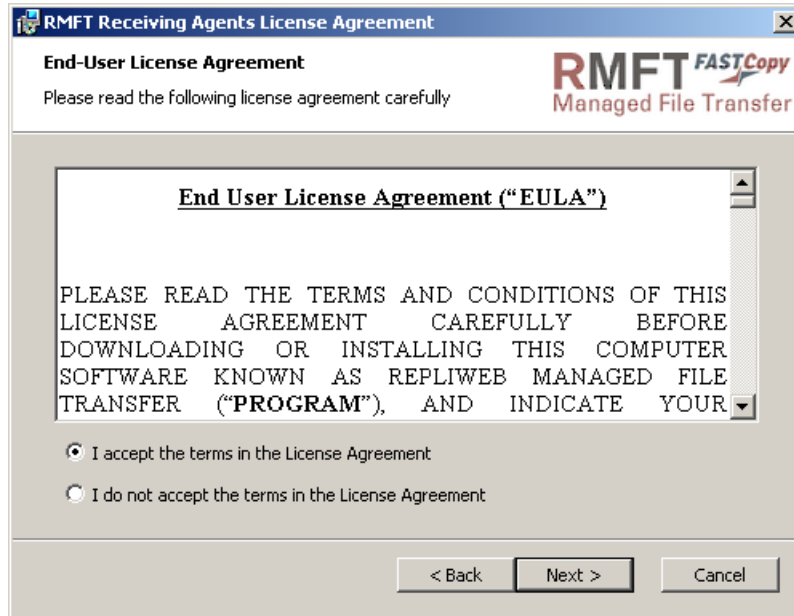


After the files are extracted the Setup wizard opens and the **Welcome** screen is displayed.



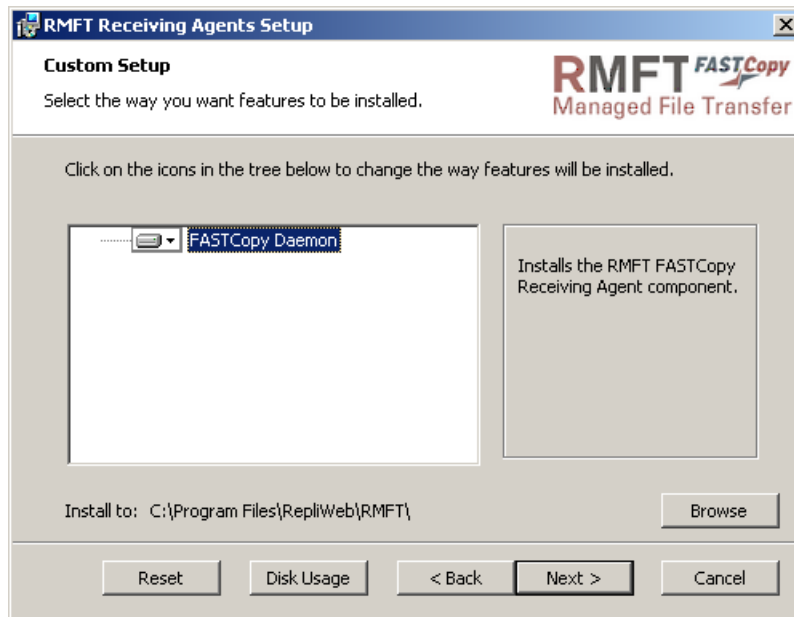
3. Click **Next**.

The **End-User License Agreement** screen is displayed.



4. Select **I accept the terms in the License Agreement** and then click **Next**.

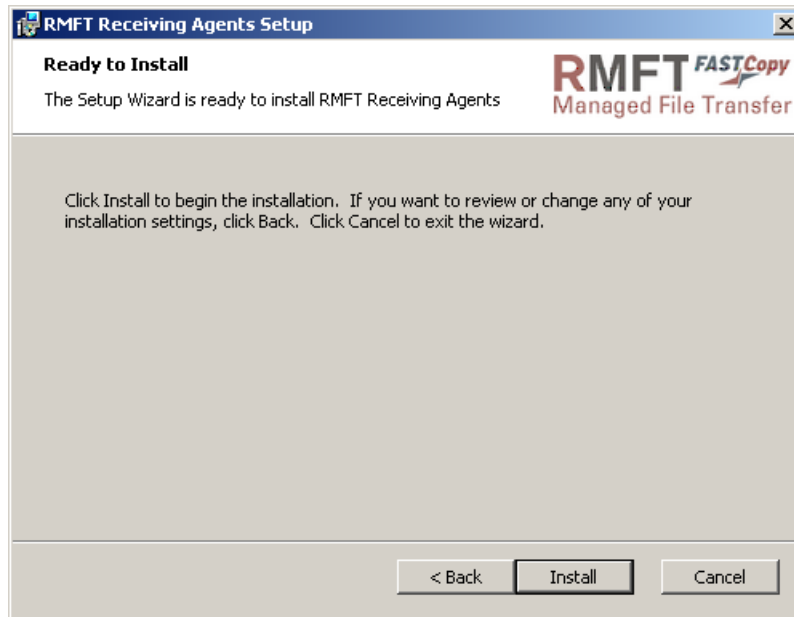
The **Custom Setup** screen is displayed.



5. To change the default installation directory, click **Browse** and select a different directory.

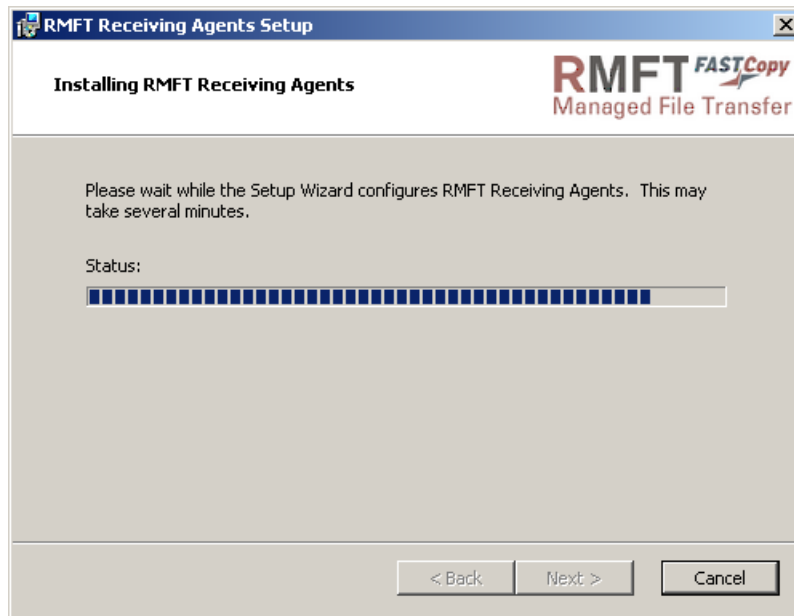
6. Click **Next**.

The **Ready to Install** screen is displayed.



7. Click Install.

The RMFT FASTCopy Receiving Agent installation begins.

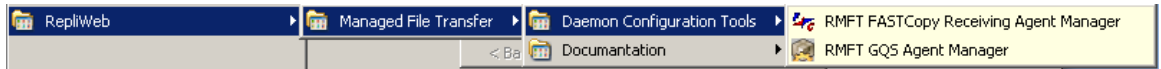


When the installation completes the following screen is displayed.

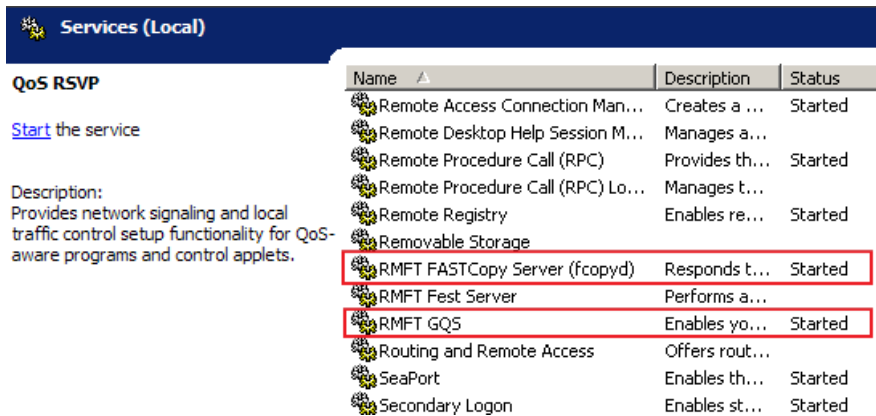


8. Click **Finish** to exit the Setup Wizard

The following item should now appear in your **Start** menu under **All Programs** .



9. Open the Windows **Services** console and verify that the RMFT FASTCopy Server and RMFT GQS services are running.

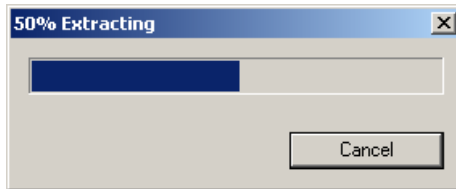


2. Upgrading the Installation

To upgrade RMFT FASTCopy Receiving Agent:

1. Copy the RMFT FASTCopy Receiving Agent self-extracting installation file (**RMFT_Receiving_Agents_<version>.exe**) to a directory on your computer.
2. Run the setup file.

The RMFT FASTCopy Receiving Agent Setup files are extracted to a temporary directory.



After the files are extracted the **Upgrade Wizard** opens.



3. Click **Upgrade**.

Setup copies the required files to your computer. After the files are copied, the following screen is displayed.



4. Click **Finish**.

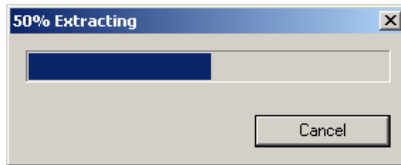
3. Modifying, Repairing or Removing the Installation

You can modify, repair or remove the installation by running the setup file of the currently installed version.

To modify, repair or remove RMFT FASTCopy Receiving Agent:

1. Copy the RMFT FASTCopy Receiving Agent self-extracting installation file (**RMFT_Receiving_Agents_<version>.exe**) to a directory on your computer.
2. Run the setup file.

The RMFT FASTCopy Receiving Agent Setup files are extracted to a temporary directory.

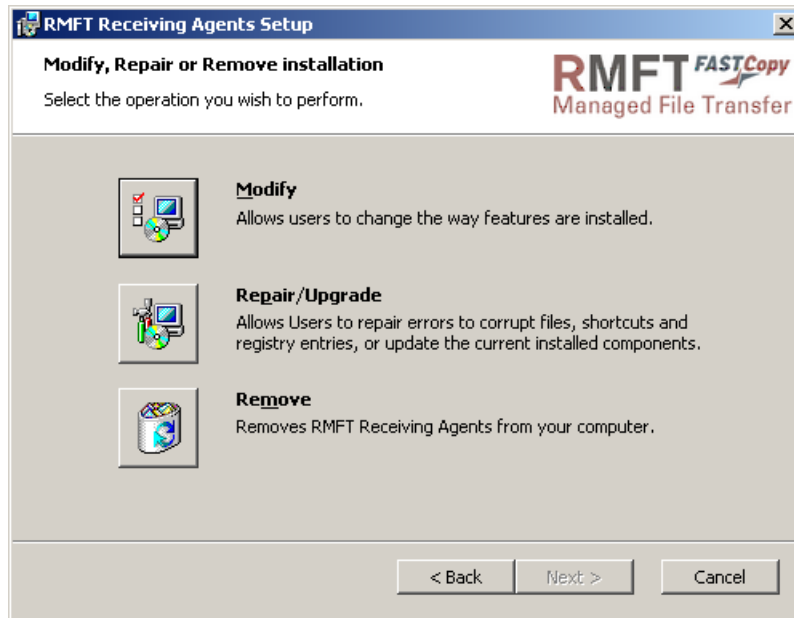


After the files are extracted the **Setup Wizard** opens.



3. Click **Next**.

The **Modify, Repair or Remove installation** screen is displayed.



4. Choose one of the available options as appropriate.

5. Click **Next** and follow the embedded instructions until setup completes.